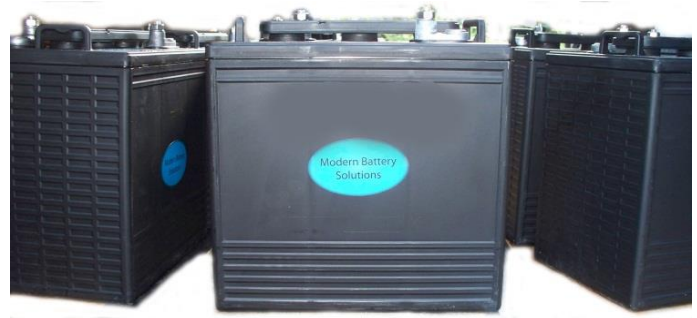


Modern Battery Solutions



THE LONGER LIFE DEEP CYCLE BATTERIES

Today's Golf Courses, Commercial and Personal Electric Vehicles demand high performance. Batteries must not only meet runtime requirements, they have to provide long term dependability and reliability.

The GC6-105, GC8-875, GC12-1275, Deep Cycle Batteries bring it back to the basics. No fancy trademarks or exotic alloys. Only time tested technology backed by Proven Engineering and Performance.



DC-31 ↗

GC12-1275



CALCIUM/CALCIUM GRID ALLOY

Reduces over gassing and extends intervals between watering.
Provides excellent corrosion resistance for longer life.

HIGHER DENSITY PASTE

Optimizes energy density and prolongs cycle life by resisting material shedding and plate deterioration.

FIBER REINFORCED SEPARATORS

Helps retain cell compression during cycling and improves plate life in high vibration applications.

OPTIMIZED PLATE DESIGN

Balances structural design with performance.
Reduces common failure modes found in deep cycle batteries.

CONVENIENT CARRY HANDLES

Simplifies installation and provides an easy, safe method of handling batteries.



GC8-875

CALL TO ORDER 714-248-9288

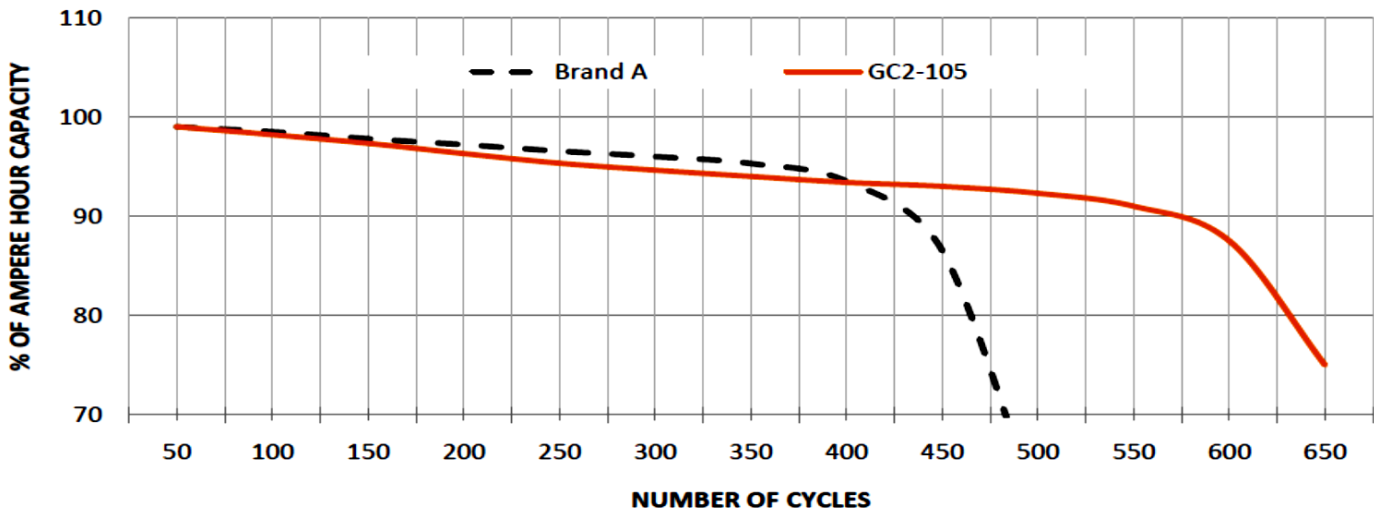
THE LONGER LIFE DEEP CYCLE BATTERIES

Modern Battery Solutions		Specifications					
Model	Voltage	Reserve Capacity Runtime Minutes @ 25 Amps	Reserve Capacity Runtime Minutes @ 56 Amps	Reserve Capacity Runtime Minutes @ 75 Amps	AMP HOUR @ 20 HR	AMP HOUR @ 5 HR	Weight
GC-105	6 Volt	447	*	115	225	185	63 lbs
GC8-875	8 Volt	295	117	*	170	145	64 lbs
CG12-1275	12 Volt	280	102	*	150	120	82 lbs
DC-31 (Gem Cars)	12 Volt	220		55	120	100	-

UP TO 25% LONGER CYCLE LIFE

Testing in accordance with the SBA8002 Life Cycle test. The GC2-105 exceeds **625** cycles.

NORMALIZED LAB DATA



DISCHARGE RATE: 0.25C5 (3 Hr), DEPTH OF DISCHARGE: 75%
 RECHARGE: 115%, WATER TEMP: 104°F (40°C)

GC-105



CALL TO ORDER 714-248-9288